



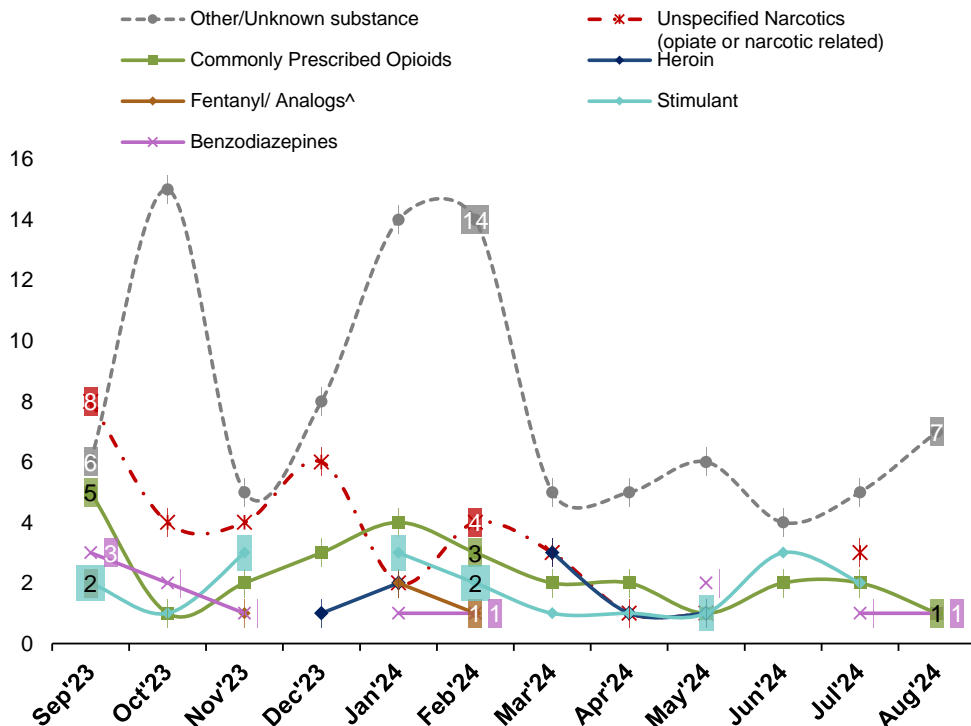
Rockingham County

2024* YTD

106

ED VISITS FOR OVERDOSE INVOLVING MEDICATIONS OR DRUGS WITH DEPENDENCY POTENTIAL

Med/Drug^ Overdose ED Visits by Med/Drug Class Last 12 Months: Rockingham County



^Report is based on initial encounter, **unintentional** and **undetermined** intent cases only, for ICD10CM overdose codes of drugs and medications with dependency potential within T40, T42, T43, T50.7, and T50.9.

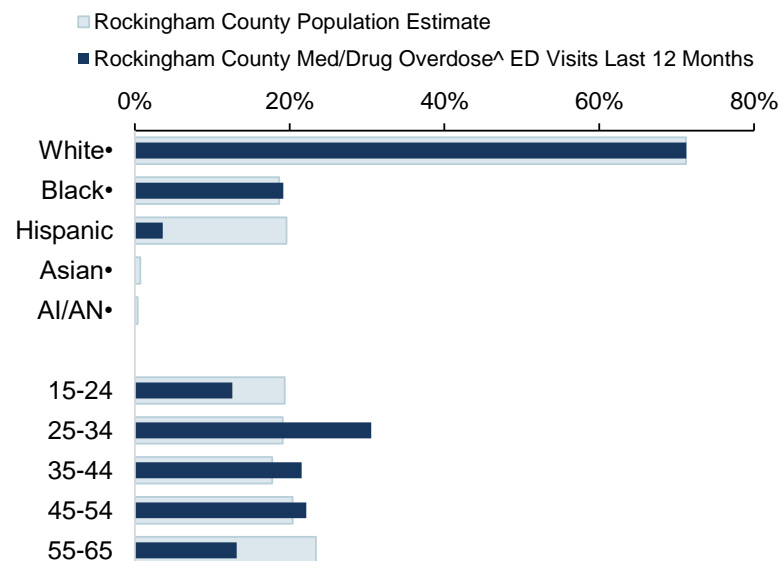
Note: Report is restricted to N.C. residents ages 15 to 65 years. Drug classes shown are not mutually exclusive, a person may have more than one drug overdose diagnosis code, therefore, a person may be represented in multiple lines in the graph above. *Data is provisional; YTD (Year to date). NC DETECT is North Carolina's statewide syndromic surveillance system. There may be data quality issues affecting our counts. Population Data-U.S. Census Bureau, <http://quickfacts.census.gov>

106 Overdose ED Visits for Med/Drugs^ with Dependency Potential in Rockingham County, 2024*YTD

compared to 153 for Jan-Aug 2023*

Data Source: NC DETECT: ED; Syndrome: Overdose: Unintentional/ Undetermined Medication or Drug Overdose (>14/<66) (ICD-9/10-CM)

Med/Drug^ Overdose ED Visits by Race/Ethnicity and Age Group



*Non-hispanic, **except** when ethnicity data are missing or incomplete (less than 85% ethnicity data available); if ethnicity is missing, race categories include both Hispanic and Non-Hispanic. AI/AN (American Indian/ Alaskan Native)

