



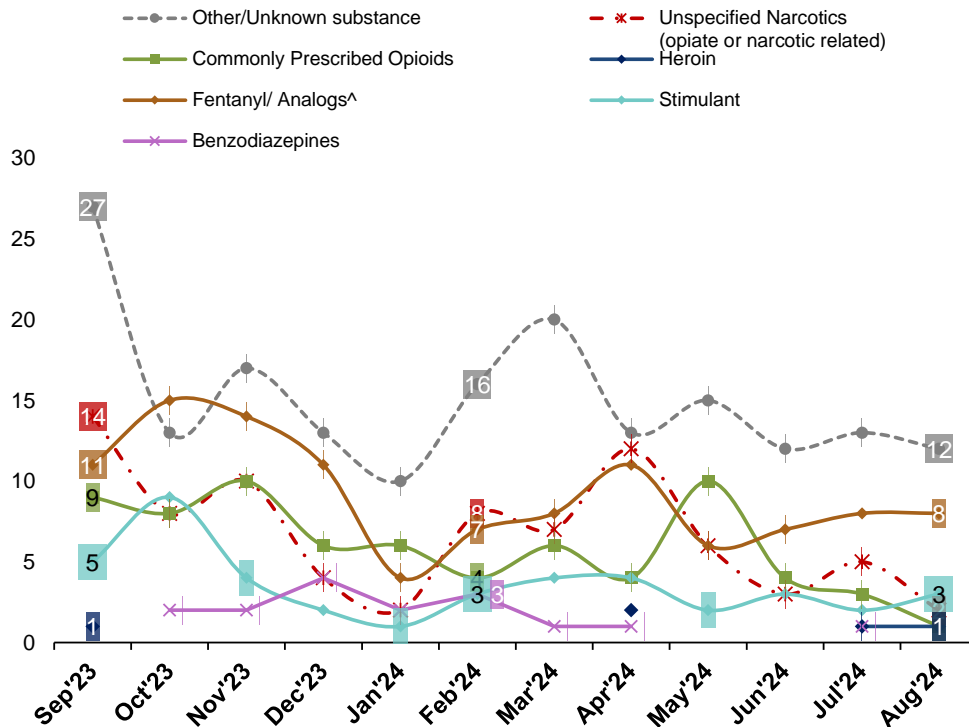
# Buncombe County

## 2024\* YTD

### 242

### ED VISITS FOR OVERDOSE INVOLVING MEDICATIONS OR DRUGS WITH DEPENDENCY POTENTIAL

#### Med/Drug^ Overdose ED Visits by Med/Drug Class Last 12 Months: Buncombe County



^Report is based on initial encounter, **unintentional** and **undetermined** intent cases only, for ICD10CM overdose codes of drugs and medications with dependency potential within T40, T42, T43, T50.7, and T50.9.

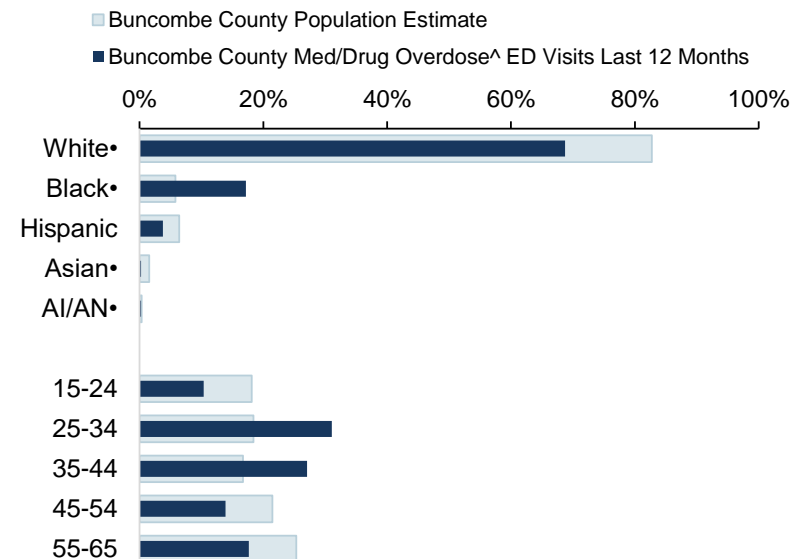
**Note:** Report is restricted to N.C. residents ages 15 to 65 years. Drug classes shown are not mutually exclusive, a person may have more than one drug overdose diagnosis code, therefore, a person may be represented in multiple lines in the graph above. \*Data is provisional; YTD (Year to date). NC DETECT is North Carolina's statewide syndromic surveillance system. There may be data quality issues affecting our counts. Population Data- U.S. Census Bureau, <http://quickfacts.census.gov>

## 242 Overdose ED Visits for Med/Drugs^ with Dependency Potential in Buncombe County, 2024\*YTD

### compared to 338 for Jan-Aug 2023\*

Data Source: NC DETECT: ED; Syndrome: Overdose: Unintentional/ Undetermined Medication or Drug Overdose (>14/<66) (ICD-9/10-CM)

#### Med/Drug^ Overdose ED Visits by Race/Ethnicity and Age Group



\*Non-hispanic, **except** when ethnicity data are missing or incomplete (less than 85% ethnicity data available); if ethnicity is missing, race categories include both Hispanic and Non-Hispanic. AI/AN (American Indian/ Alaskan Native)

