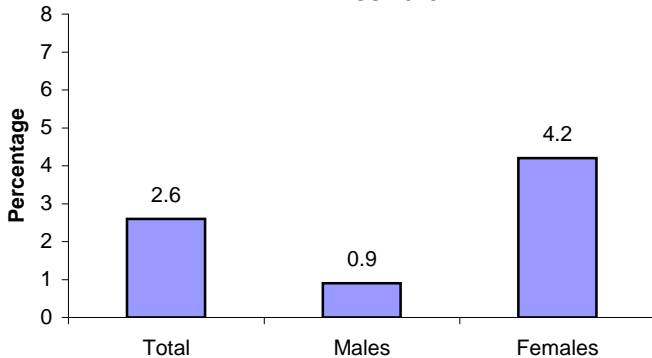


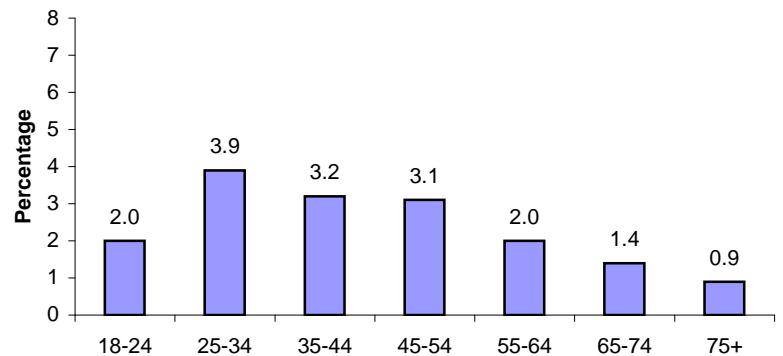
# SURVEILLANCE UPDATE

## Sexual Assault by Stranger: 2010 N.C. Behavioral Risk Factor Surveillance System

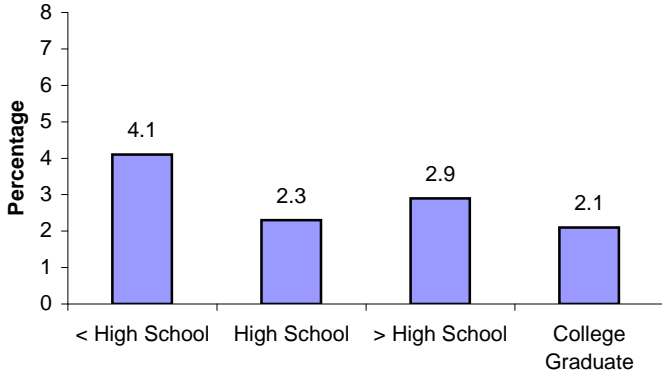
Percentage of people in N.C. who reported forced sexual contact with a stranger, by gender: N.C. BRFSS 2010



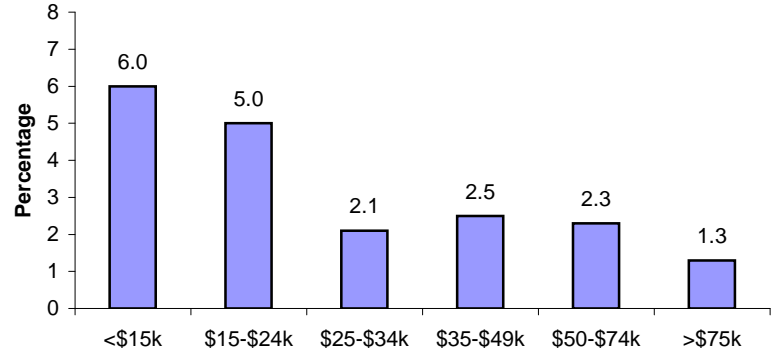
Percentage of people in N.C. who reported forced sexual contact with a stranger, by age group: N.C. BRFSS 2010



Percentage of people in N.C. who reported forced sexual contact with a stranger, by educational attainment: N.C. BRFSS 2010



Percentage of people in N.C. who reported forced sexual contact with a stranger, by income: N.C. BRFSS 2010



The North Carolina Behavioral Risk Factor Surveillance System (N.C. BRFSS) provides a critical source of public health data for understanding the scope of injury-related problems and measuring progress toward overall statewide goals. The North Carolina BRFSS Survey is a random-digit-dialing telephone survey of non-institutionalized adults, ages 18 and older. In 2010, more than 12,000 respondents completed the survey. Every year a core set of injury-related questions are asked. In 2010, injury-related questions were asked on topics regarding falls, seatbelt use, traumatic brain injury, and sexual and physical violence. This surveillance update includes data collected in 2010 on 11,278 surveys. Results presented here are for adults who reported being forced to have sex or do sexual things with a stranger. Percentages are weighted to population characteristics. See the N.C. BRFSS website for more information, specific details on item responses, and data limitations: [www.schs.state.nc.us/SCHS/brfss](http://www.schs.state.nc.us/SCHS/brfss).